



## COPPER STRUCTURED CABLING

# KEYSTONE JACK

# UTP 6A

### PRODUCT SPECIFICATIONS

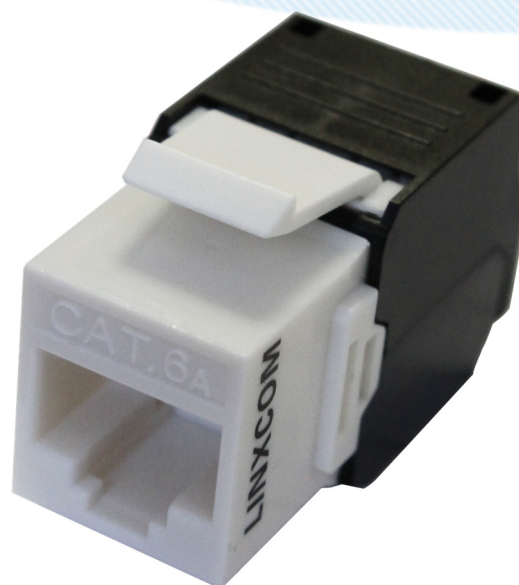
Linxcom UTP CAT6A Keystone Jacks comply with the EIA/TIA standard for Category 6 and have a 180° termination structure.

They have a tool-free design allowing for termination without the need for a punch down tool.

Available in Black, White or White & Black.

### APPLICATIONS

- POTS, T1&Tq fractional
- 4/16 Mbps Token Ring (IEEE802.5)
- ASDN basic & primary rate
- 52/155 Mbps ATM (ATM Forum)
- 10 BASE-T (IEEE802.3)
- 100 BASE-T4 (Fast Ethernet)
- 100 VG-Any LAN (IEEE802.12)
- 100 BASE-T (Fast Ethernet)
- 100 Mbps TP-PMD
- 1 Gbps Ethernet (IEEE802.3)
- 10 Gbps Ethernet



COLOURING			
Pair 1	Pair 2	Pair 3	Pair 4
Blue, Blue/White	Orange, Orange/White	Green, Green/White	Brown, Brown/White

### PERFORMANCE

Contact Resistance	20M Ω Max
Insulation Resistance	500M Ω @ DC 500V
Withstand Voltage	DC 1000V
Plastic Material	PC UL94V-0
IDC Material	PC
Terminal	Phosphor Bronze/ Tin Gold
IDC Life	250x Min
Insertion Life	750x Min

### ENVIRONMENTAL SPECIFICATIONS

Operation (°C)	-10~+60
Installation (°C)	-40~+70

### ORDERING INFORMATION

Part Number	Category	Jack Type	Colour
UTP6AKSJBL	6A	180°C Keystone Jack	Black
UTP6AKSJWH	6A	180°C Keystone Jack	White
UTP6AKSJWB	6A	180°C Keystone Jack	White/ Black