



FIBRE MANAGEMENT

INDOOR TERMINAL BOX

7

PRODUCT SPECIFICATIONS

Linxcom Fibre Optic Terminal Boxes are light and compact whilst maintaining ample fibre storage needs and minimum bend radius. Terminal Boxes can be wall mounted and have a variety of core capacities and adapter types available.

APPLICATIONS

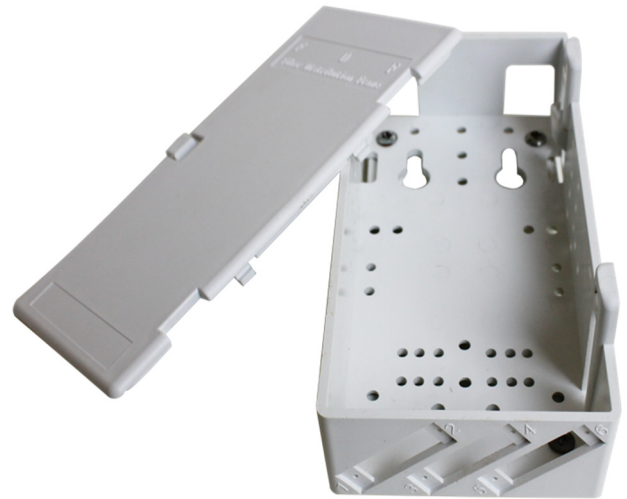
- Aerial
- Direct- Burial
- Wall & Terrace Mounting

FEATURES

- Lightweight
- Optional entries
- Connector for FC, SC, ST or LC

BENEFITS

- Easy Operation
- Connect/ Reconnect adaptors over 200 x



SPECIFICATIONS

Purpose	Wall & Terrace Mount
Capacity	12
Cable Entries	6
Dimensions	160x80x49mm
Weight	0.104kg
Material	ABS

ENVIRONMENTAL SPECIFICATIONS

Operation (°C)	-40~+75
Installation (°C)	-40~+75

ORDERING INFORMATION

Product Code	Model	Fibre Type	Adaptor Type	Simplex/ Duplex	
LXMITB7XXXXX	7	Unloaded	EM	ST	Simplex S
		Singlemode	SM	SC	Duplex D
		Multimode	MM	FC	
		SM APC	SMA	LC	