



FIBRE MANAGEMENT

INDOOR TERMINAL BOX

4

PRODUCT SPECIFICATIONS

Linxcom Fibre Optic Terminal Boxes are light and compact whilst maintaining ample fibre storage needs and minimum bend radius. Terminal Boxes can be wall mounted and have a variety of core capacities and adapter types available.

APPLICATIONS

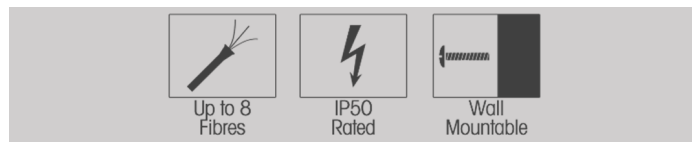
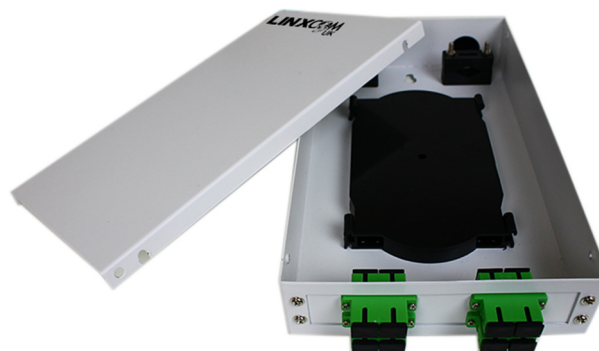
- Aerial
- Direct- Burial
- Wall & Terrace Mounting

FEATURES

- Lightweight
- Two Cable Ports
- Connector for FC, SC, ST or LC

BENEFITS

- Easy Operation
- Connect/ Reconnect adaptors over 200 x



SPECIFICATIONS

Purpose	Wall & Terrace Mount
Capacity	8
Cable Entries	2
Dimensions	265x155x48mm
Weight	1kg
Lateral Pressure Resistance	500N
Material	Cold Rolled Steel
Shock- Resistance	750N

ENVIRONMENTAL SPECIFICATIONS

Operation (°C)	-40~+80
Installation (°C)	-40~+80

ORDERING INFORMATION

Product Code	Model	Fibre Type	Adaptor Type	Simplex/ Duplex/ Quad
LXMITB4XXXXX	4	Unloaded	EM	ST
		Singlemode	SM	SC
		Multimode	MM	FC
		SM APC	SMA	LC
				Simplex S
				Duplex D
				Quad Q