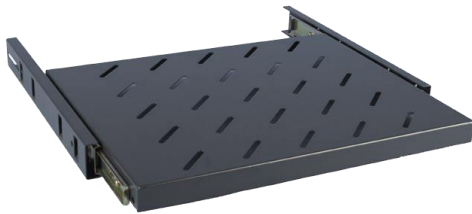




Cabinets & Racks

Telescopic Sliding Shelf



Features & Benefits

- 1U height
- Fixed between front & rear mounting profiles
- Ideal for access to the rear of products
- Load capacity over 45kgs

Ordering Information

Product Code	Description
LXMA-2-600	1U Telescopic Sliding Shelf 600mm Deep
LXMA-2-800	1U Telescopic Sliding Shelf 800mm Deep
LXMA-2-960	1U Telescopic Sliding Shelf 960mm Deep