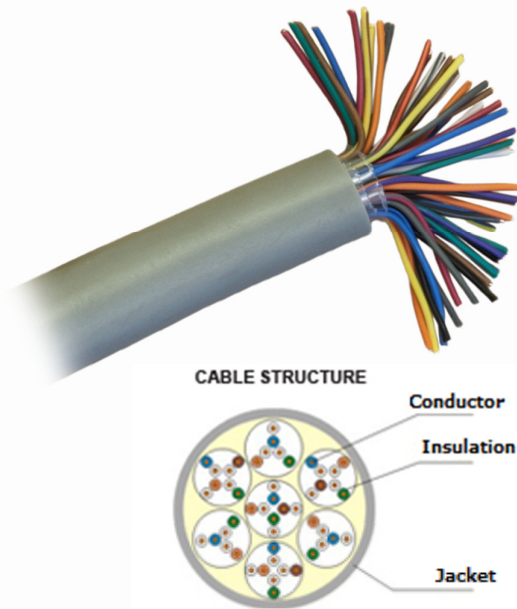


Voice

U/UTP Multi-pair Cable

Voice UTP Multi Pair Cable



Linxcom Unshielded Twisted Pair (UTP) Voice (CAT3) copper cable is used ideally for indoor or outdoor use.

Our cables are verified by EC and third party organization and comply with ISO11801.

All outer jackets can be PVC or LSZH upon customers' requests.

Features & Benefits

- Multi-pairs cable
- All cables meet or exceed the requirement proposed by TIA /EIA 568 B .2 ,ISO/IEC 11801 Category 3
- Insulated copper conducts with PVC or LSZH jacket
- Pairs are brightly coloured and distinguished at a glance
- Ultra smooth jacket makes this cable easy to pull in tight spaces
- Indoor and outdoor cable types available

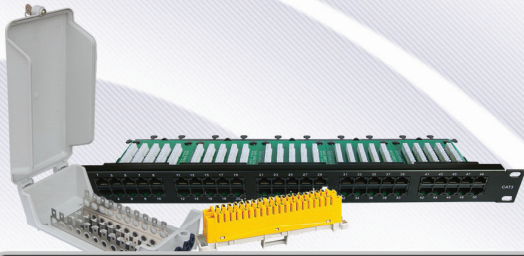
Electrical Characteristics

Frequency (MHz)	SRL (dB)	Insertion Loss (dB/100m)	NEXT (dB)
0.772	12.0	2.2	43.0
1	12.0	2.6	41.0
4	12.0	5.6	32.0
8	12.0	8.5	28.0
10.1	12.0	9.7	26.0
16	10.0	13.1	23.0

1.0-16.0MHz Impedance (ohms)	16 ± 15
Pair-to-Ground Capacitance Unbalance (pF/100m)	330 Max
Max. Conductor DC Resistance 20oC (ohms/km)	93.8
Resistance Unbalance (%)	5

Mechanical Characteristics

Test Object	Jacket
Test Material	PVC
Before Tensile Strength (Mpa)	>=13.8
Aging Elongation (%)	>=100
Aging Condition (°C x hrs)	100 x 240
After Tensile Strength (Mpa)	>=85% of unaged
Aging Elongation (%)	>=50% of unaged
Cold Bend (-20±2°Cx4hrs)	No crack



Voice

U/UTP Multi-pair Cable

Ordering Information

Using the available configurations amend/create a part number using the formula below.

Construction/Category		Pairs	
UTP Category 3 (Unshielded Twisted Pair CAT3)	UTP3	10-100 Pairs	10P-100P
UTP3	ID	10P	PVC
Cable Type		Sheath Material	
Indoor	ID	PVC	PVC
Outdoor	OD	LSZH	LSZH

Example: **UTP3ID10PPVC** - Category 3 UTP PVC LAN 10 Pair Voice Cable 500m Reel

For any queries, please contact the Linxcom team using the details below.