

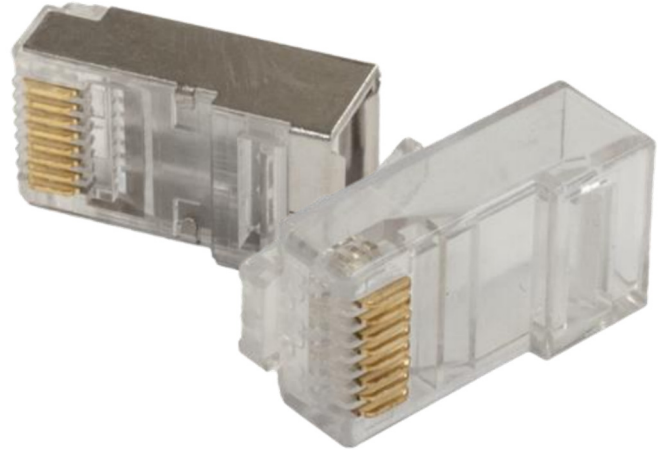


COPPER TOOLS & ACCESSORIES

PLUGS

PRODUCT SPECIFICATIONS

Linxcom 8P8C Plugs are a crucial component for any installer terminating cables. They come available in STP or UTP.



TECHNICAL SPECIFICATIONS

Insulation Resistance	100m
Termination	Max 20m after environmental testing
Durability	200 Mating Cycling
Housing	Polycarbonate
Colour	As per request
Contact	Phosphor Bronze

ORDERING INFORMATION

Product Code	Description
UTP5EPLUGS	Linxcom UTP Cat 5e RJ45 Plugs
STP5EPLUGS	Linxcom STP Cat5e RJ45 Plugs
UTP6PLUGS	Linxcom UTP Cat 6 RJ45 Plugs
STP6PLUGS	Linxcom STP Cat6 RJ45 Plugs
UTP6APLUGS	Linxcom UTP Cat 6A RJ45 Plugs
STP6APLUGS	Linxcom STP Cat6A RJ45 Plugs