



## FIBRE MANAGEMENT

# INLINE ENCLOSURE

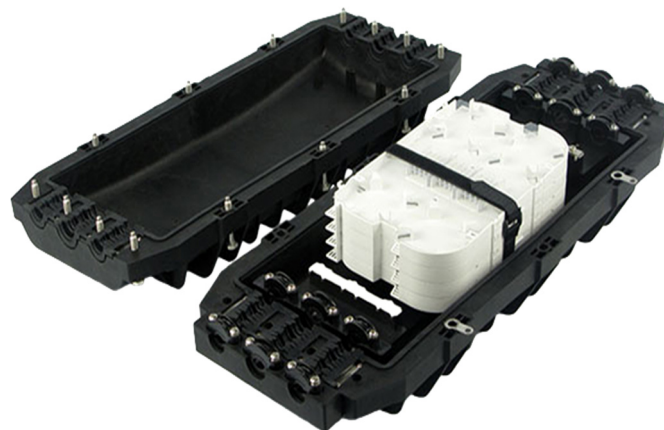
# PP05

### PRODUCT SPECIFICATIONS

Linxcom model PP05- Inline Enclosure provides protection over direct, branch and continual connection for cables. They are easy and reliable to install, delivering high mechanical strength against every environmental condition. Widely used in many applications.

### APPLICATIONS

- Aerial
- Direct- Burial
- Wall & Pipeline Mounting

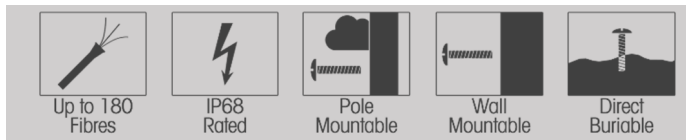


### FEATURES

- HQ Polypropylene
- Up to 180F
- Removable Adaptor Plate

### BENEFITS

- Sturdy IP 68 & IK 10
- No Special Tools Required
- Protects Fibres in Field



### SPECIFICATIONS

Purpose	Aerial, Direct-Burial, Wall & Pipeline Mounting
Capacity	180
Cable Entries	6
Dimensions (mm)	648x253.8x158
Weight (kg)	6.55
Sealing	Mechanical
Material	Polypropylene
Splicing Per Cassette	12
Cable Diameter (mm)	φ10~25

### ENVIRONMENTAL SPECIFICATIONS

Operation (°C)	-40~+65
Installation (°C)	-40~+65

### ORDERING INFORMATION

Product Code	Model	Seal	Cable Entries	Core Size/Capacity
LXMPP05INLXXM	PP05	Mechanical	6	12,24,36,48,60,72,84,96,108,120,132,144,156,168,180

