



## FIBRE MANAGEMENT

# INLINE ENCLOSURE

## PP04

### PRODUCT SPECIFICATIONS

Linxcom model PP04- Inline Enclosure provides protection over direct, branch and continual connection for cables. They are easy and reliable to install, delivering high mechanical strength against every environmental condition. Widely used in many applications.

### APPLICATIONS

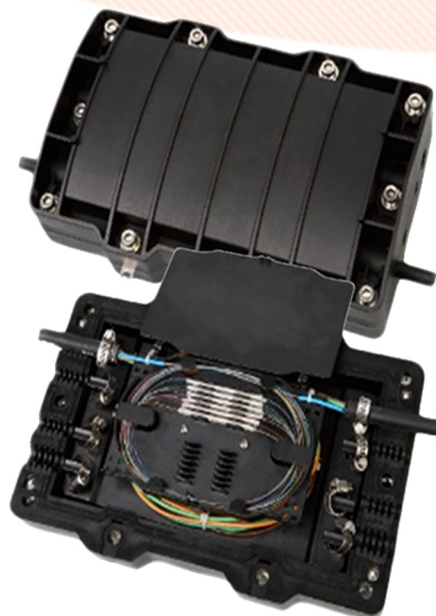
- Aerial
- Direct- Burial
- Wall & Pipeline Mounting

### FEATURES

- HQ Polypropylene
- Up to 48F
- Removable Adaptor Plate

### BENEFITS

- Sturdy IP 68 & IK 10
- No Special Tools Required
- Protects Fibres in Field



Up to 48 Fibres



IP68 Rated



Pole Mountable



Wall Mountable



Direct Buriable



### SPECIFICATIONS

Purpose	Aerial, Direct-Burial, Wall & Pipeline Mounting
Capacity	48
Cable Entries	8
Dimensions (mm)	280x180x85
Weight (kg)	1.8-2.2
Sealing	Mechanical
Material	Polypropylene
Splicing Per Cassette	12,24
Cable Diameter (mm)	φ6~12

### ENVIRONMENTAL SPECIFICATIONS

Operation (°C)	-40~+65
Installation (°C)	-40~+65

### ORDERING INFORMATION

Product Code	Model	Seal	Cable Entries	Core Size/Capacity
LXMPP04INLXXM	PP04	Mechanical	8	12,24,36,48