



## FIBRE MANAGEMENT

# INLINE ENCLOSURE

## PP03

### PRODUCT SPECIFICATIONS

Linxcom model PP03- Inline Enclosure provides protection over direct, branch and continual connection for cables. They are easy and reliable to install, delivering high mechanical strength against every environmental condition. Widely used in many applications.

### APPLICATIONS

- Aerial
- Direct- Burial
- Wall & Pipeline Mounting

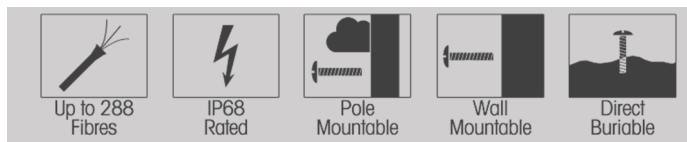


### FEATURES

- HQ Polypropylene
- Up to 288F
- Removable Adaptor Plate

### BENEFITS

- Sturdy IP 68 & IK 10
- No Special Tools Required
- Protects Fibres in Field

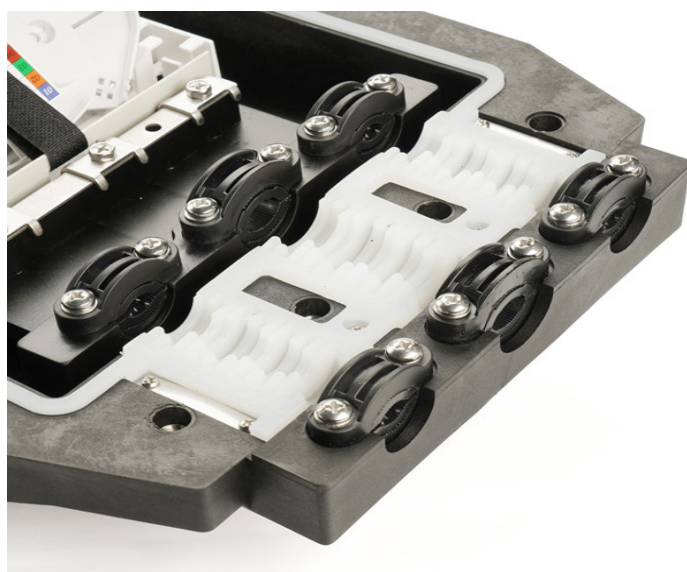


### SPECIFICATIONS

<b>Purpose</b>	Aerial, Direct-Burial, Wall & Pipeline Mounting
<b>Capacity</b>	288
<b>Cable Entries</b>	6
<b>Dimensions (mm)</b>	648x253.8x158
<b>Weight (kg)</b>	6.5-8.5
<b>Sealing</b>	Mechanical
<b>Material</b>	Polypropylene
<b>Splicing Per Cassette</b>	24
<b>Cable Diameter (mm)</b>	φ10~25

### ENVIRONMENTAL SPECIFICATIONS

<b>Operation (°C)</b>	-40~+65
<b>Installation (°C)</b>	-40~+65



### ORDERING INFORMATION

Product Code	Model	Seal	Cable Entries	Core Size/Capacity
LXMPP03INLXXM	PP03	Mechanical	6	12,24,36,48,60,72,84,96,108,120,132,144,156,168,180,192,204,216,228,240,252,264,276,288