

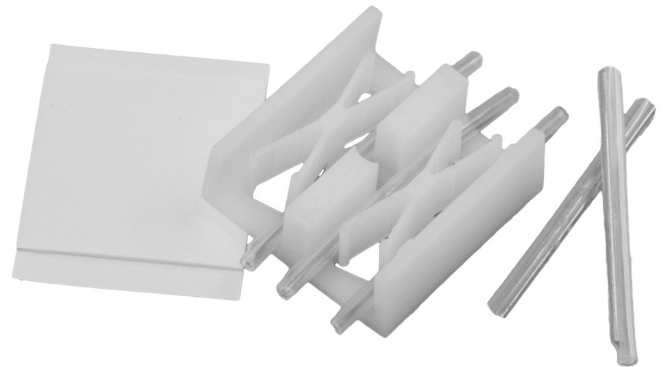


FIBRE MANAGEMENT

HIGH DENSITY SPLICE BLOCK

PRODUCT SPECIFICATIONS

Linxcom Splice blocks are used in the management of patch panels or other enclosures to hold splices and wind fibres. These units can hold up to 16~32 fibres with 1.3mm diameter. Made of High Strength Nylon.



ORDERING INFORMATION

Product Code	Description
HDSPLICEBLOCK01	Linxcom High Density Splice Block- 16 Splices